

TORONTO RAVEL

just for the love of it!

“ANIMÉ ET RUDE” - REH 92 → PRIMARY MUSICAL MATERIALS

3. ‘motor’ - several variations
- also used for brass figures

1. bass ostinato - also used in WW

2. chromatic motion



4. battle theme



5. hexachord-based melody, first stated in flute

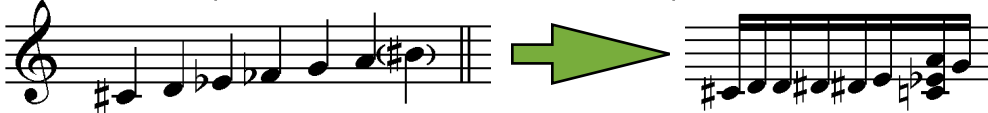


1. bass ostinato - based on hexachord



Each scale contains a tritone. Each melody or pattern outlines the tritone, and makes it a prominent feature. This blurs any sense of tonality or key, and results in pure gesture.

2. “chromatic” pattern - based on a 7-note scale (septachord)



Vn I, Vn IIa

4. Battle theme - based on hexachord



5. Flute melody hexachord

